

## Stainless Steel-Wing nuts

### SPECIFICATION

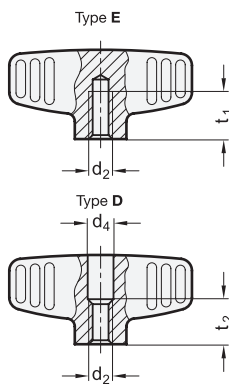
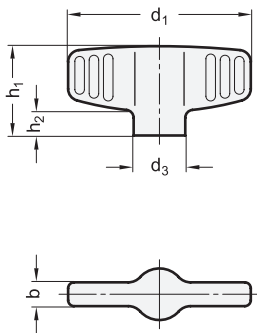
#### Types

- Type **E**: with threaded blind bore
- Type **D**: with threaded through bore

Stainless Steel AISI CF-8 (Precision casting)  
matt shot-blasted **MT**

### TECHNICAL INFORMATION

- Stainless Steel characteristics (see page A26)



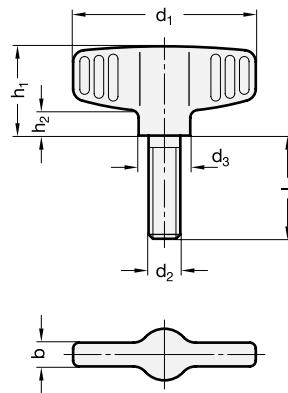
## Stainless Steel-Wing screws

### SPECIFICATION

Stainless Steel AISI CF-8 (Precision casting)  
matt shot-blasted **MT**

### TECHNICAL INFORMATION

- Stainless Steel characteristics (see page A26)



### GN 834

#### STAINLESS STEEL

Description	d1	d2	d3	d4	b	h1	h2	t1 min.	t2	Δ
GN 834-46-M6-D-MT	46	M 6	13	6.5	6	22.5	6	-	10	38
GN 834-46-M8-D-MT	46	M 8	13	8.5	6	22.5	6	-	13	39
GN 834-58-M8-D-MT	58	M 8	16	8.5	7	26.5	7	-	13	65
GN 834-58-M10-D-MT	58	M 10	16	10.5	7	26.5	7	-	16	55
GN 834-46-M6-E-MT	46	M 6	13	-	6	22.5	6	12	-	41
GN 834-46-M8-E-MT	46	M 8	13	-	6	22.5	6	15	-	39
GN 834-58-M8-E-MT	58	M 8	16	-	7	26.5	7	15	-	73
GN 834-58-M10-E-MT	58	M 10	16	-	7	26.5	7	18	-	60

### GN 835

#### STAINLESS STEEL

Description	d1	d2	l	d3	b	h1	h2	Δ
GN 835-46-M6-16-MT	46	M 6	16	13	6	22.5	6	40
GN 835-46-M6-20-MT	46	M 6	20	13	6	22.5	6	41
GN 835-46-M6-25-MT	46	M 6	25	13	6	22.5	6	42
GN 835-46-M8-16-MT	46	M 8	16	13	6	22.5	6	49
GN 835-46-M8-20-MT	46	M 8	20	13	6	22.5	6	50
GN 835-46-M8-25-MT	46	M 8	25	13	6	22.5	6	52
GN 835-58-M8-20-MT	58	M 8	20	16	7	26.5	7	75
GN 835-58-M8-25-MT	58	M 8	25	16	7	26.5	7	76
GN 835-58-M8-30-MT	58	M 8	30	16	7	26.5	7	77
GN 835-58-M10-20-MT	58	M 10	20	16	7	26.5	7	80
GN 835-58-M10-25-MT	58	M 10	25	16	7	26.5	7	81
GN 835-58-M10-30-MT	58	M 10	30	16	7	26.5	7	82

